



ARGOSY

A COMPANY & PRODUCT OVERVIEW



ABOUT ARGOSY

Founded in 1984, Argosy has become synonymous with the highest quality products and service levels for studios and System Integrators within the Broadcast & Communications sectors. More than any other distributor, we are able to put together a package of the finest materials and ship anywhere in the world, whilst at the same time offering a truly personal service at competitive prices.

Over the years we have developed excellent relationships with manufacturers chosen for their ability to provide exactly the right components of the best possible quality. These brand leaders include: Allied-Telesis, Belden, BES, Canare, Draka, Ghieletti, Kvm-Tec, Lemo, Mellanox, Neutrik, Switchcraft and OCC. In some cases Argosy has helped them to gain their premier position.

Certain products, such as 19" racks and mains/power distribution units have been designed around parameters set by Argosy (from consulting with our customers), making them truly appropriate and ideal for their applications within the Broadcast & Communications industry.

We have gone to great lengths to find associated products, from cable identification numbers to connector crimp tools; from 19" racks to M6 washers; from MDU's to KVM Switches and Routers. The cables we supply are used for HD-SDI video, digital and Analogue audio, RS422 and RS232 control, Category 6 and 6A data networks and for Mains Power - and we have suitable connectors and tooling for them all.

We focus our efforts primarily within the Broadcast and Media industries, thereby maintaining our position as the foremost TV Studio installation materials distributor in EMEA.



INDEX

- 4-5 RACKING AND METALWORK
- 6 MAINS DISTRIBUTION & POWER
- 7 PATCHING & TERMINATION
- 8 KVM SWITCHES
- 8 NETWORK SWITCHES & FIBRE TRANSPORT
- 9 VIDEO CABLE & CONNECTORS
- 10 AUDIO CABLE & CONNECTORS
- 11 STRUCTURED CABLING & DATA
- 12 FIBRE OPTIC
- 13 DEPLOYABLE SOLUTIONS
- 14 SERVICES



RACKING & METALWORK

Designed specifically for the broadcast industry by Argosy, our newly designed 'image' equipment rack range incorporates a variety of features to help simplify installation and maintenance, whilst minimising rollout costs.

KEY BENEFITS

- ***Open design base, maximises cable access***
- ***Flexibility to add another set of cable trays for intensive cabling***
- ***Flexible positioning of mounting profiles to allow quick relocation of profiles to suit custom needs***
- ***U designation to aid partial loading of kit without the need to measure***
- ***Increased internal capacity, aids air circulation and heat dispersion***
- ***Easy Baying to save time, with no special tooling required***

STANDARD SPECIFICATION

- Robust welded steel frame
- 3 pairs of mounting rails with U designation
- Ventilated top with knockouts for cable entry
- Pair of 300mm metal cable trays
- Removeable Transit castors
- Star washers (to ensure earth continuity)

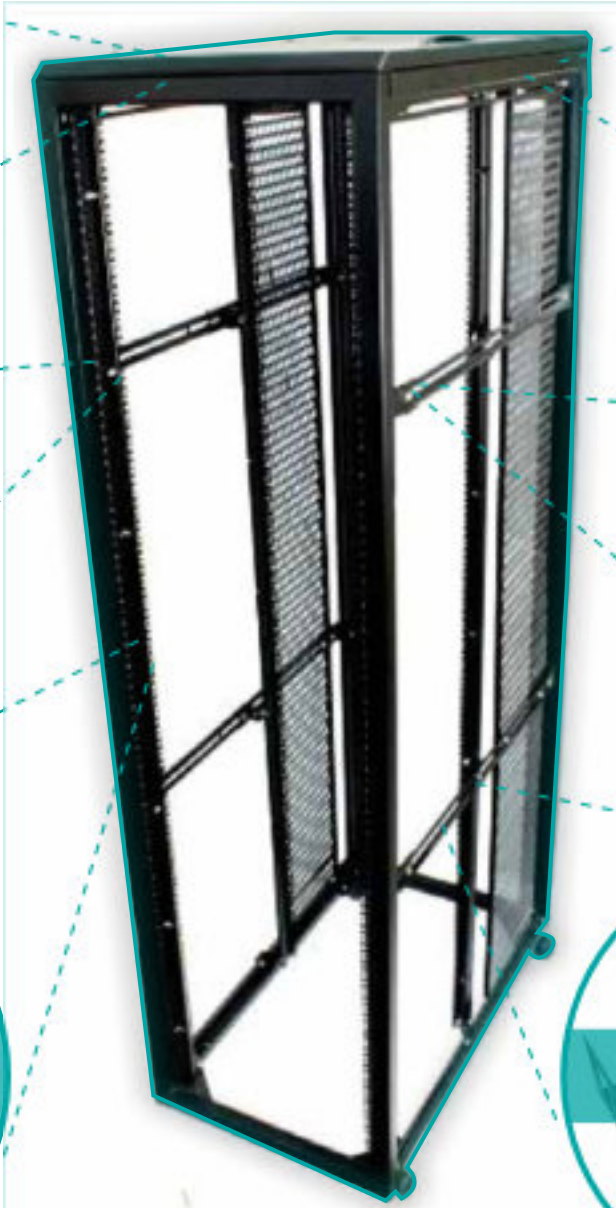
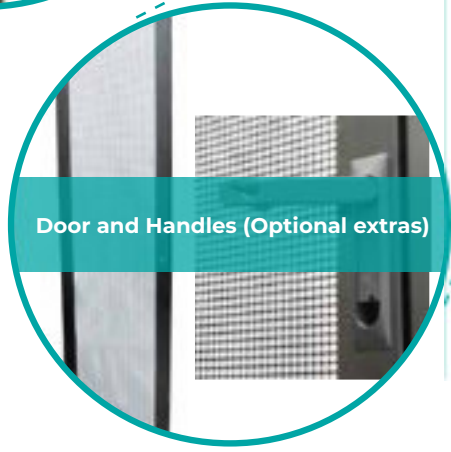
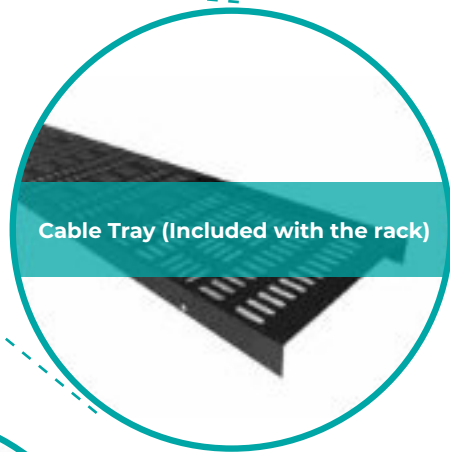
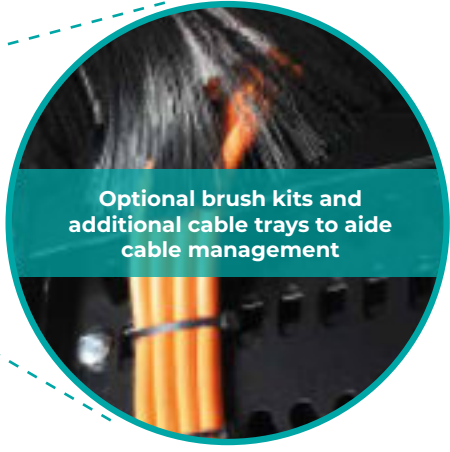
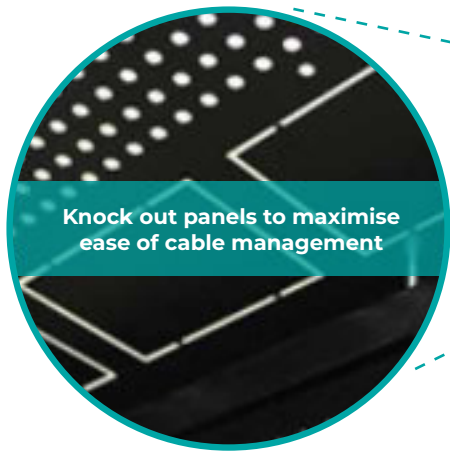
STANDARD OPTIONS

- Heights: 42, 45, 47 RU. (1RU = 44.45mm)
- Depths: 800, 900, 1000, 1200mm
- Widths: 600mm or 800mm
- Colours: Black, Grey
- Finish: Semi Matt Leatherette

ACCESSORIES

- Doors, Side panels
- Baying kit
- 'U' tape
- Fan trays
- Heavy duty castors, adjustable feet
- Plinths
- Drop in support & shelves
- Brush strip for lid knock outs
- Additional pair of metal cable trays





MAINS DISTRIBUTION UNITS & POWER

The Argosy range of Mains Distribution Units (MDU) are designed for the safe distribution of mains power within equipment racks. Available as 1RU 19" rack mountable with IEC outputs which are individually fused with power present LED's on the front panel.

OPTIONS:

STANDARD UNIT

This unit features a Neutrik Powercon input connector and a Powercon loop-through connector on the rear to facilitate daisy chaining to a second unit, however the circuit is limited to 16 amps max at the source. This unit has a front switch and 14 IEC Outputs.

SEQUENTIAL UNIT

This unit is identical to the Standard MDU except it powers up sequentially to avoid overloading the input power supply.

CHANGEOVER UNIT

This unit safeguards equipment from primary mains supply failure. In normal operation the outputs are supplied from the primary (A) supply. If the primary supply fails, the relay switches to the secondary supply (B). The relay switches at ~25ms and the small glitch on the mains supply is dealt with by the power supplies in the powered equipment.

High quality British standard 3 pin IEC mains Leads (Male to Female), available in a choice of Black, Grey, Orange and Blue Jackets in 0.5m, 1m, 1.5m, 2m, 3m, 4m & 5m lengths.



INTELLIGENT UNIT

Introducing network connectivity to our range of Mains Distribution Units, these enable secure remote monitoring and control of up to 32 units from one network address. The MDU allows for comprehensive metering of the mains input while giving flexible control to each output.

Mains Connectors also available in various configurations including:

- IEC
- Ceeform (Commando)
- PowerCon



1RU 19" rack mountable with 14 IEC outputs which are individually fused with power present LED's on the front panel.



Industrial Mains connectivity available from stock.

PATCHING & TERMINATION



Argosy offers a comprehensive range of Video termination and patch panels in a choice of configurations, designed to satisfy the most stringent technical requirements at 1080i, (3G) 1080p or UHD (12G) data rates.

OPTIONS:

◆ MUDIGSA STYLE

The Mudigsa style HD video patch panel is housed in a 1RU frame with integral cable tie-bar and is available in 24 or 32 way configurations. The 32 way panel fully loaded with U-links weighs just 2.4kg making it ideal for flight case and OB applications where space and weight is a premium.

A return loss of 20dB at 3GHz makes them suitable for all current single wire standards of SMPTE 292M, dual link SMPTE 372M and digital cinema SMPTE 424M.

The Teflon insulators allow a small degree of movement to ensure good mating contact with minimal insertion or extraction force. U-links are required to make the circuit, plus there are a range of coloured caps to code circuit to preference, as well as 300– 1200mm patch cords.

◆ ARGOSY 1RU 24 WAY 3G HD MUSA

The new Argosy 1RU 24 way 3G HD Musa panel offers a suitable alternative to normalised panels for HD video circuits. The Musa Jack has been designed to exceed the SMPTE 424m Requirement for 3G HD -15dB @1.5GHz and 10dB @3GHz. The panel is integrated via standard HD BNC connector and a tie bar is provided for cable lacing. The jacks centre contact have a 30µ gold flash over Nickel plate which increases durability and improves insertion loss. U-links are required to make the circuit, plus there are a range of coloured caps to code circuit to preference, as well as 300– 1200mm patch cords.

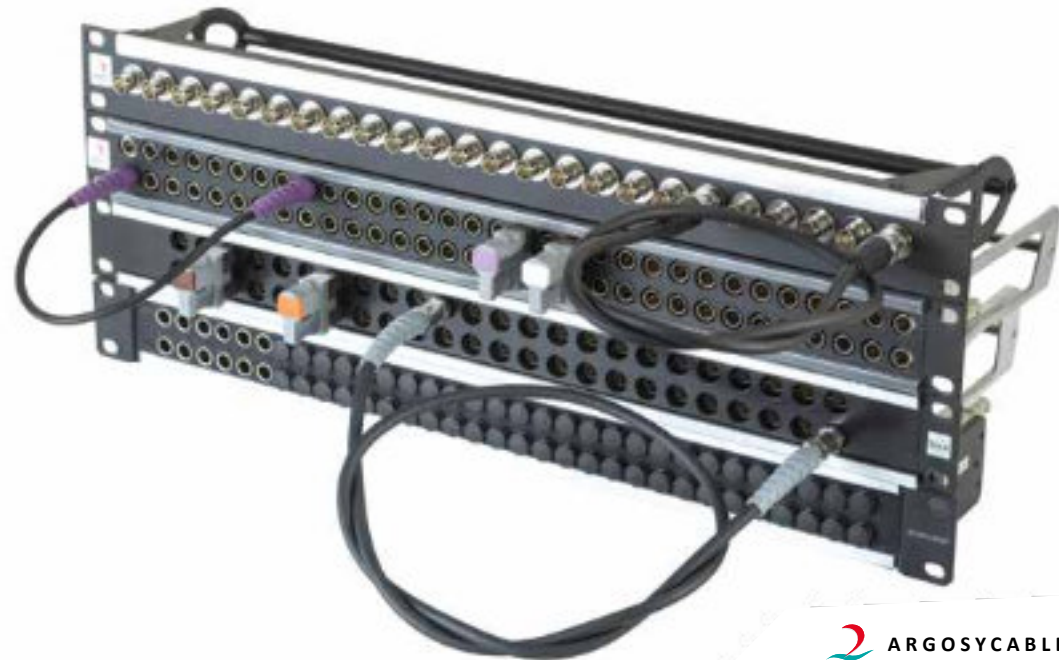
◆ CANARE'S 75 OHM MID-SIZE VIDEO PATCHBAY

Canare's 75 Ohm Mid Size Video Patchbay with 32 way normalising jacks featuring Canare's original "Rotary" Switch, is a professional grade SMPTE 424M compatible mid-sized WECO patch panel and uses the highest quality Beryllium Copper, Gold Plated Centre Contacts, offering the widest bandwidth and longest lasting jacks with true 75 Ohm impedance.

◆ ARGOSY 4K/12G BNC TERMINATION PANELS

The Argosy 4K UHD BNC termination panels are design for use in 2160p full HD video circuits. These panels offer exceptional electrical performance at 12GHz with better than -15.7dB return loss, falling to -26.0dB at 6GHz.

They are manufactured from extruded Aluminium which delivers a light weight yet extremely strong panel and are fitted with a snap fit Ident strip. They also feature a large OD tie bar with robust end braces, which make landing cables easier and addresses issues associated with smaller bars.



KVM SWITCHES

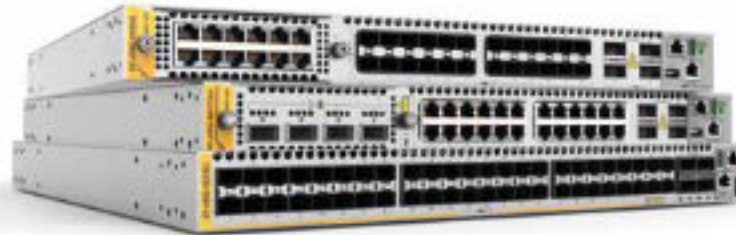
Argosy has partnered with Austrian KVM specialist kvm-tec to bring a range of ultra-high resolution extender devices, guaranteeing a true 4K resolution. This combined with the perfect colour coding 4:4:4 @ 8bit per colour – provides an amazing picture.

Ultraline 4K extenders can be used with a standard network switch to create a full KVM Matrix Switching System without any additional hardware. Additionally a Switching Manager (available separately) provides easy and intuitive management interface for all KVM Extenders on a network.



NETWORK SWITCHES

From basic GbE unmanaged edge switching to 400GbE fully managed switches for spine leaf networks used in IP Video networks, Argosy offers a variety of switches to meet your requirements. Partnered with Allied Telesis and Mellanox who provide intelligent and secure switching solutions that utilise cutting edge technologies to ensure your network runs effectively and efficiently.



FIBRE TRANSPORT

Automation, Conversion, Distribution and Extension! The Barnfind Fibre transport products offer the opportunity to extend the reach of signals that are limited by Copper media, 'connecting anything to anything'. Whether extending the reach of SDI, MADI or ethernet signals, converting from Single mode to Multi mode or distributing and routing signals, Barnfind offers solutions from single fibre to multiple fibres.



VIDEO CABLE & CONNECTORS

We tailor our BNC connectors to fit our range of video cables so that engineering and wiring teams can have confidence in the system's reliability. We have developed our own brand of robust BNC connectors, plus we also offer connectors from other market leading manufacturers including: Neutrik and Telegartner, with tooling to fit each option, so whether the requirement is 1080i, 1080p or UHD, we have you covered!

OPTIONS:

◆ IMAGE FAMILY

The 'Image' family of HD Digital Video cables is available exclusively from Argosy and has been carefully designed to provide superior performance at high frequency digital applications, as well as also being suitable for the lower frequencies used in analogue applications. The small diameter of the Image range has an added benefit over traditional analogue video cables, by affording weight and spaces savings in high-density installations.

- ◆ Image 360 cable is primarily used for in-rack wiring and OB trucks.
- ◆ Image 720 cable is primarily used for in-rack wiring and short inter-area runs.
- ◆ Image 1000 cable is primarily used for longer inter-area runs.
- ◆ Image 2000 cable is used where longer transmission runs are required

We stock a range of colours as standard including:

Green, Turquoise, Violet, Cream and Grey.

Customer colours are available upon request.

The Image family is compliant to ECA rated CPR fire safety classifications with full Decorations of performance (DOP) documentation.



◆ BELDEN RANGE

Complementing the Image family is the Belden range of coaxial video cables, available from stock in 6 different specifications (depending on the application and transmission distance required):

- ◆ 179DT
- ◆ 1855A
- ◆ 1855ENH
- ◆ 1505ANH
- ◆ 1694ANH
- ◆ 7731ANH

The standard Belden range is further enhanced by an option of stranded centre conductors for applications requiring more flexible cables.



AUDIO CABLE & CONNECTORS

Argosy stocks a large range of analogue and digital audio cables from a number of leading manufacturers. Designed for applications including Microphones, Speaker and for the interconnection of equipment within fixed installation and in mobile use.

OPTIONS:

◆ FSAP

Our range of FSAP twisted pair analogue audio cable, designed specifically for fixed installation wiring, consists of 2 twisted conductors with foilscreen and drain. **The cable is available in three colours, Black, Red or Blue and in PVC or LSOH jackets.**

◆ DA110

The DA110 multi-channel twisted pair digital audio cable is manufactured exclusively for Argosy by Draka and is available in 1, 5, 10 & 25 pair versions. The solid 110Ω conductors are suitable for IDC punch down applications, therefore making it the ideal solution for jack-field to Krone applications.

◆ STAR-QUAD

Star-quad cables are designed with four insulated conductors, twisted together in very short lay lengths, with specially calibrated insulation helping to retain signal clarity through areas of high EM interference by cancelling out electromagnetic noise from SCR dimmer packs, florescent lighting ballast and AC power transformers. Because of their excellent signal to noise ratio and the ability to cancel out EMI noise; these cables are ideal for long run Microphone lines in stage, stadium &, OB environments.



◆ SPEAKER CABLE

Speaker Cable made with high-endurance polymer jacket material offers excellent abrasion-resistance and impact protection whilst maintaining the internal core structure without kinks or twists. Core stranding is optimised for flexibility and high-frequency conductivity without compromising reliability or ease of termination.

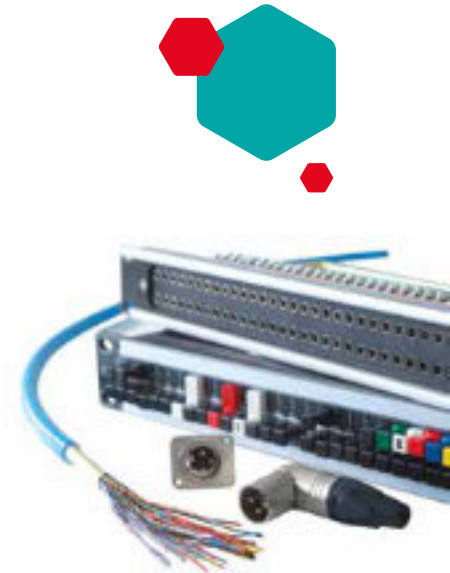
◆ JUMPER WIRE

Argosy CW1109 type Jumper wire features a PVC Insulation with 0.5mm solid copper conductor and a softer PVC insulation which makes it easier to terminate.

Available in Multi-Colour Combinations Suitable for IDC terminations.

◆ AUDIO PATCH PANEL WIRE

Also available in this section is a range of 1.0mm, 1/0.6mm and 7/0.2mm Equipment wire for wiring Audio patch Panels and 18AWG Tinned Copper wire used for bussing Audio patch Panels.



STRUCTURED CABLING & DATA

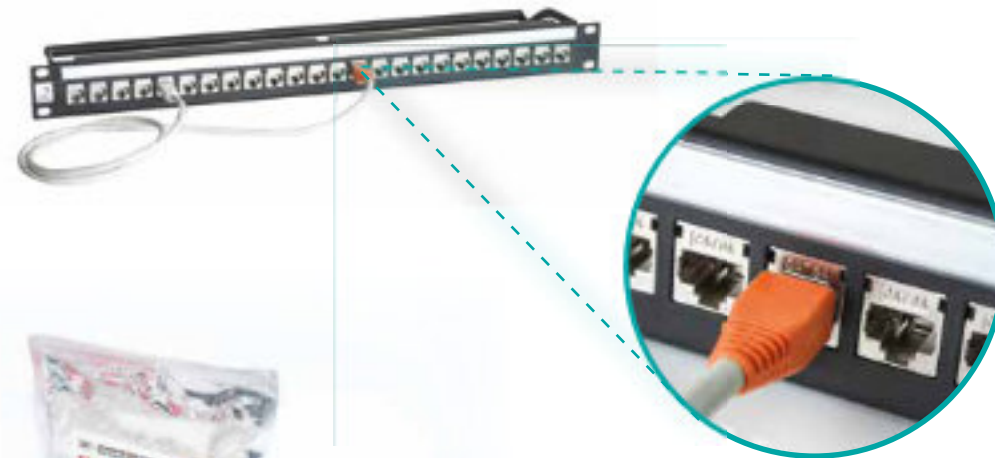
Whether its Cat5E, Cat6 or CAT6A, Argosy has taken great care to bring together some of the finest quality materials in a systems approach to deliver a comprehensive range of structured cable/ network infrastructure products supporting data transport over the highest frequencies within next generation data communication networks and meeting the TIA/EIA & ISO/IEC standard for 10G system performance.



DATA PATCH PANEL

The Argosy through coupler panel is designed to deliver fast and familiar integration of data and control networks. These panels utilise high performance through coupler modules which meet the TIA/EIA & ISO/IEC standard for 10G system performance, and also meet the relevant standards for Cat 6 & 5e systems.

They are offered in a 1U chassis with a clip on identification strip and a rear tie-bar to help secure cables. The back-to-back jacks eliminate the need for rear punch-down connectivity as found on other panels, speeding up the termination process and removing the need for special tooling. As part of the Argosy term panel range these panels utilise the same pitch and style as our 24 way term panels with other connectors.



Argosy brings a systems' approach to structured cabling by offering a proprietary CAT6 connector solution that included RJ45 connectors, boots and tooling sourced from the same manufacturer.

FIBRE OPTIC

The Argosy fibre termination tray has been designed with the broadcast installation in mind. The 1RU tray comes with adjustable rack ears enabling recessing up to 125mm, the slam locks provide quick and easy access to the tray when rack mounted, and secure locking after many cycles.

Cables entry is made from the rear from a choice of fibre glands or via a brush strip. The tray is suitable for patch cables, splice or pre-term installations or mixed. It is supplied with cable management, a splice bridge and ident strip.

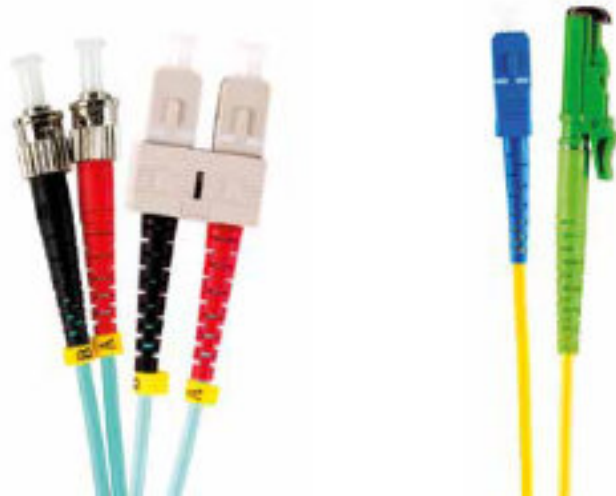
Available as standard in SC simplex and LC duplex formats in both Single Mode or Multi Mode. Custom configuration are available upon request.

Argosy can provide a range of tactical fibre solutions in Duo, Quad or MTP (12 core) configurations with a variety of jacket materials to suit specific applications, including fixed, mobile or extreme jackets for use in harsh environments.

Tactical fibre cables are stocked in 2, 4, 6, 8, 12 and 48 core from manufacturers including OCC, Belden and Draka.



Argosy offers a plug and play compact splice box for the distribution of up to 8 SMPTE cameras for OB and studio environments. Supplied with a SMPTE angled front panel connectors, recessed mounting brackets and wired internally to LC connectors allowing easy connection to multiway installation fibres via spliced pig tails.



DEPLOYABLE SOLUTIONS

Argosy has developed a number of innovative solutions to help engineers to deploy infrastructure in the field. These range from special over-jacketed cables for ruggedized protection in harsh environments. To custom cable reels to allow for simple and fast deployment of cable assemblies to speed up the rigging and de-rigging of outside broadcast events.

We have partnered with a number of leading connector manufacturers to produce high quality tactical fibre optical systems that allow broadcasters to maximise signal transport distances, ideal for remoting camera and sound locations across vast distances.

We have added specific Hardware; such as Barnfind fibre transport devices to receive signals from multiple sources across various protocols and transmit the output via a single fibre stream. Whether it's Triax, SMPTE Hybrid fibre, multi-way audio or multi-channel data protocols, remote cameras or sound stages. Argosy has a range of products to suit the application.



Argosy is an approved termination partner for Lemo and Fischer Connectors and can manufacture SMPTE Camera cables using Draka, Belden or Furukawa cable in a variety of lengths from 1 metre patch cords to 500 metre. We carry a range of Skeleton drums to allow the fast and safe deployment of fibre systems.



Argosy produce a range of termination throw down boxes to facilitate on site connectivity for stage and studio use. These can be custom designed to meet customers needs.



Break out fibre solutions made in-house.

SERVICES

◆ WE DO CABLE HARNESSING

Argosy manufactures a broad variety of standard, or customised cable assemblies for Audio, Data, Power and Video. From single link to multi-way harness with single or mixed media, we can assist and develop cable solutions to meet your requirement.

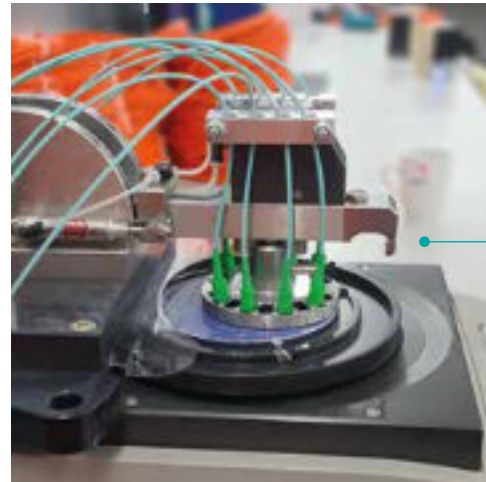


◆ WE DO FIBRE TERMINATION

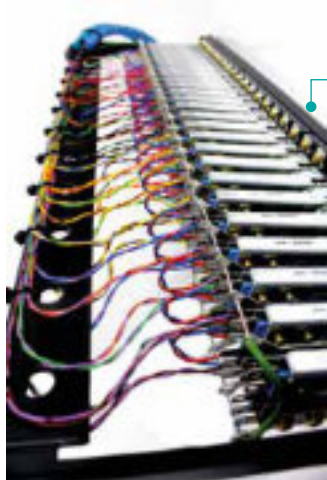
With long-standing partnerships with the leading manufacturers of fibre cable and connectors. Our technicians are certified to terminate solutions from:

- Lem o 93K SMPTE connectors
- Neutrik OpticalCon including MTP
- Senko MPO,
- OCC MHCT

These partnerships allow us to offer a broad range of standard and harsh environment solutions from single fibre fixed installed to multi-fibre deployable, or customized per your requirement. Our termination facility utilises the latest technology and equipment from industry-leading vendors, which enable us to offer consistent high performing assemblies you can count on.



Multi-way Fibre Polishing.



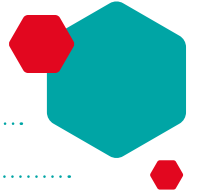
Argosy can pre-wire audio jack-fields.



Cable reeling available on request.



NOTES



A series of horizontal dotted lines for writing notes.



Argosy

Units 6 & 7 Ridgeway
Drakes Drive
Long Crendon
Buckinghamshire
HP18 9BF
United Kingdom

t: +44 (0)1844 202101

e: sales@argosycable.com

Argosy Middle East L.L.C

Showroom number 10
Al Habbai Building
Behind Times Dunes Hotel Apartment
Oudmetha
Dubai
UAE

t: +9714 357 6800

e: sales@argosycable.com

www.argosycable.com

